

DRESSTA **TD-12C-XP**

CRAWLER DOZER
STD & LGP

- **Net Horsepower**
106 kW (142 hp)
- **Blade Capacity**
up to 3.52 m³ (4.6 yd³)
- **Operating Weight**
14 939 kg (32,866 lb)



TD-12C-XP

CRAWLER DOZER

STD & LGP

- Two speed geared steering
- Modular power train
- Lubricated Track System
- Sound reduction packages
- Sloped hood
- 6-way blade



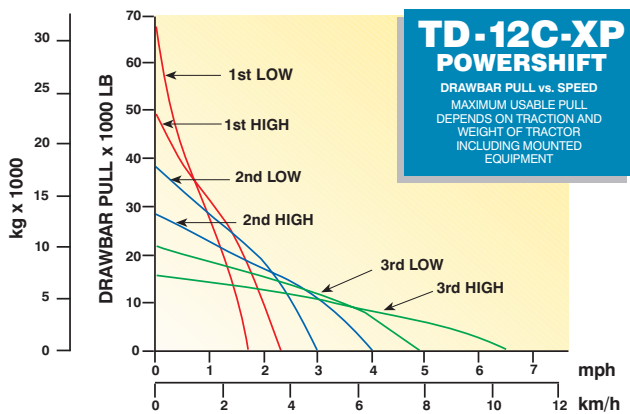
ENGINE

- * Make and model KOMATSU S6D102E-1
- Type 4-cycle diesel, turbocharged, direct, injection, direct start
- ** Gross Horsepower @ 2500 rpm 113 kW (152 hp)
- *** Net Flywheel power @ 2500 rpm 106 kW (142 hp)
- Maximum torque @ 1600 rpm 550 Nm (405 lb ft)
- Number of cylinders 6
- Displacement 5.88 l (359 in³)
- Bore and stroke 102 x 120 mm (4.02" x 4.72")
- Lubrication Gear pump driven force lubrication with full flow filtering
- Number of main bearings 7
- Electrical system 24 V
- Air cleaner two-stage, dry type with primary and safety element and service indicator
- * Emission certified
- ** Output for complete engine operating under SAE J1995 conditions
- *** Output of standard engine complete with fan, air cleaner, muffler, alternator (not charging), water pump, lubricating oil pump and fuel pump, per SAE J1349

TRANSMISSION & TORQUE CONVERTER

Modular countershaft type power shift transmission, hydraulically controlled and actuated.
 Single stage 305 mm (12") torque converter with 2.16:1 stall ratio drives to transmission through a double universal joint.

Gear	Forward		Reverse	
	km/h	(mph)	km/h	(mph)
1 st	Low	2.7 (1.7)	3.4 (2.1)	
	High	3.7 (2.3)	4.5 (2.8)	
2 nd	Low	4.8 (3.0)	5.6 (3.5)	
	High	6.5 (4.0)	7.6 (4.7)	
3 rd	Low	7.9 (4.9)	9.3 (5.8)	
	High	10.5 (6.5)	12.4 (7.7)	



STEERING & BRAKING

Unique two speed geared steering module provides gradual turns while maintaining full power to both tracks plus conventional clutch-brake performance for tight or pivot turns. This type of steering system offers superior traction in all types of operations and terrain. Coupled to 3-speed transmission and torque converter provides 6 speeds forward and 6 reverse.
 Complete steering module (incl. pinion and bevel gears) is removable as an assembly for superior serviceability.
 Hand levers, conveniently located on the left, hydraulically actuate oil cooled, adjustment free, steering planetary gears, multiple disc clutches, and brakes in one control for each track. Pull back single lever to detent position for gradual turn or both levers for speed reduction. Pull lever slightly further to disengage steering clutches, fully back to brake. Single foot pedal applies both brakes for parking or downhill speed control. Brakes are spring applied and hydraulically released.

FINAL DRIVES

Double-reduction module provides desired gear reduction at the sprocket end of the powertrain. Ring-type sprocket distributes wear evenly over track bushings, letting every tooth ride free one-half of the time to reduce wear. Final drives and sprockets are replaceable without removing track frames.

TRACK FRAME

- All-welded heavy box section track frame is kept in alignment with track frame guides, providing true vertical oscillation.
- Track rollers, each side 7
- Top idlers, each side 2
- Front idlers (drum type) casting
- All rollers and idlers lifespan lubricated
- Oscillation at center of front idler 340 mm (13.4")

REFILL CAPACITIES

	Liter	US gal
Fuel tank	246	(65)
Cooling system	43.5	(11.5)
Crankcase w/filters	22	(5.75)
Transmission system	94	(25)
Final drive, each side	30	(8)

WEIGHT (Operating)

Includes standard equipment, 6-way hydraulic angle & tilt blade and full fuel.

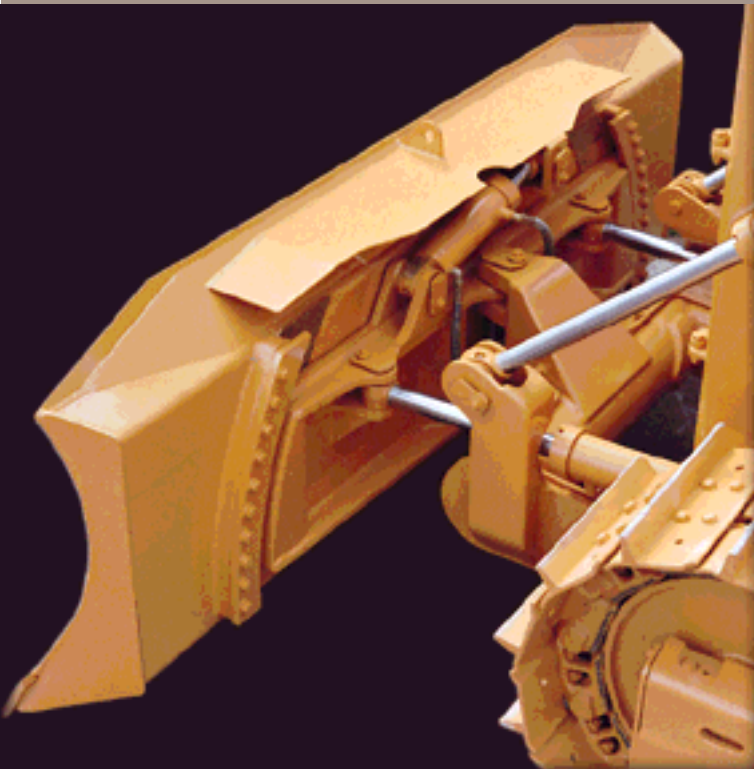
	STD	LGP
ROPS	14939 kg (32,866 lb)	15016 kg (33,105 lb)
Cab w/Air conditioner	15366 kg (33,805 lb)	15447 kg (34,054 lb)

Type	STD	LGP
Track shoe width	559 mm (22")	864 mm (34")
Strutted track link pitch	190 mm (7.49")	190 mm (7.49")
Track shoes, each side	42	42
Ground contact area	3.13 m ² (4840 in ²)	4.82 m ² (7460 in ²)
Ground pressure	47 kPa (6.8 psi)	30.5 kPa (4.43 psi)
Height of grouser	65 mm (2.56")	65 mm (2.56")
Track adjustment	full hydraulic	full hydraulic
Minimum ground clearance from bottom face of shoe	388 mm (15.26")	388 mm (15.26")
Recovery hitch - height from ground to centerline of 76 mm (3.0") clevis	507 mm (19.96")	507 mm (19.96")

The TD 12C-XP equipped with operator and environmental sound reduction packages sets new standards for operating ease, comfort, and low noise levels for both operator and spectators.

Excellent visibility in all directions, low effort controls, a comfortable operator's compartment and two-speed steering add up to reduced operator fatigue and increased productivity.

6-WAY BLADE with hydraulic angle and tilt is ideal for cutting ditches, performing slope work, or setting a final grade. Also helps in „stumping“ and dislodging stubborn rocks in land clearing. Inside-arm mounting provides compact configuration for close quarter work.

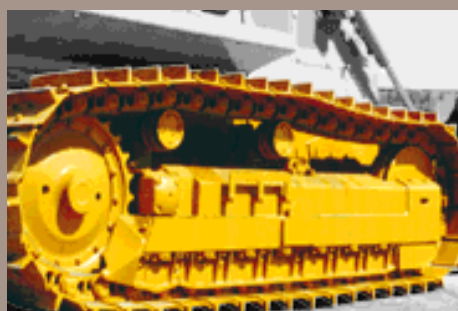


Insulated engine compartment utilizes hood side louvers and rear intake grill which provides high air flow for excellent cooling and low noise emissions.

All instruments including a wa... a resiliently mo... consist of ind... elements which... viewing side of



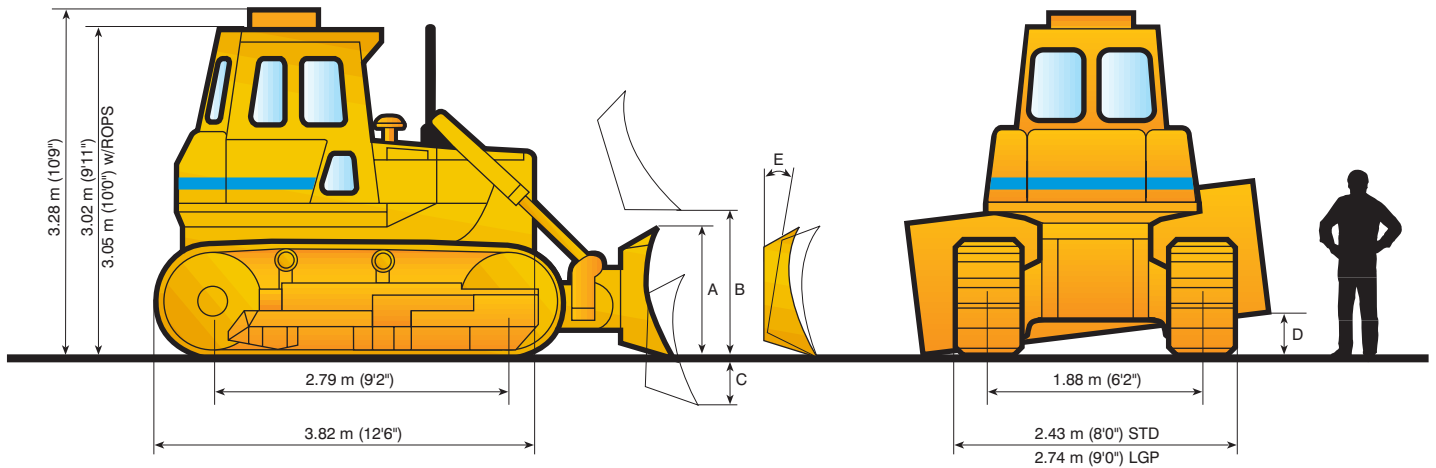
lights and electrical function switches, turning horn are conveniently located on the instrument panel. The instruments are individually replaceable „plug in“ modular instruments and can be removed and replaced from the instrument panel.



Long undercarriage provides unexcelled stability for fine grading and slope dozing. Seven (7) rollers distribute tractor weight evenly for excellent weight distribution.



A versatile multi-shank ripper is a perfect choice for penetration tough materials and rip thoroughly to the depth of 429 mm (16.9”).



OVERALL DIMENSIONS WITH EQUIPMENT

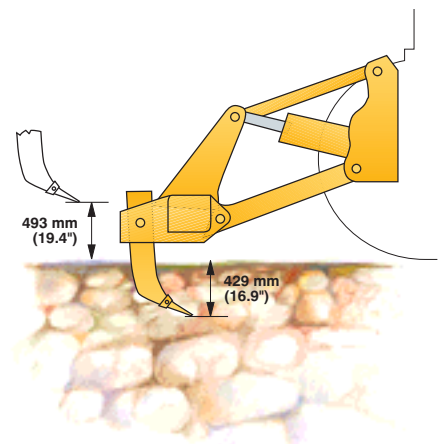
Type of Blade	Hydraulic Angle and Tilt (6 way)	SEMI-U	STRAIGHT
Length with blade	5.00 m (197.2")	5.12 m (201.5")	5.10 m (200.9")
Length with blade and ripper	6.33 m (249.5")	6.45 m (253.8")	–
Width, blade angled	2.78 m (109.5")	–	–
Width over trunnions	1.19 m (47.1")	2.64 m (103.75")	2.97 m (116.9")
Width over "C" frame	1.37 m (54.0")	–	–

BLADE SPECIFICATIONS

Type of Blade	Hydraulic Angle and Tilt (6 way)	SEMI-U	STRAIGHT
Type of Track Frame	Standard	Standard	Low Ground Pressure
Blade Capacity, SAE J1265	2.75 m ³ (3.6 yd ³)	3.52 m ³ (4.60 yd ³)	2.66 m ³ (3.48 yd ³)
Max. Usable Track Shoe Width	559 mm (22")	610 mm (24")	864 mm (34")
Blade Dimensions:			
- width over end bits	3.16 m (124.4")	3.11 m (122.4")	3.40 m (134.0")
- height, struts centered	A 1.14 m (45.0")	1.14 m (45.0")	1.00 m (39.0")
Max. lift: - straight	B 1.24 m (48.7")	1.20 m (47.3")	1.10 m (43.0")
- angled	B 1.52 m (59.7")	–	–
Max. drop below ground level	C 0.43 m (16.8")	0.53 m (20.9")	0.45 m (17.7")
Max. tilt adjustment	D 0.51 m (20.1")	0.64 m (25.0")	0.57 m (22.4")
Blade angle, either side	25°	–	–
Max. pitch adjustment	E –	9°	9°
Blade Lift Speed (at rated engine rpm) average	0.38 m/sec (1.29 ft/sec)	0.39 m/sec (1.28 ft/sec)	0.38 m/sec (1.25 ft/sec)
Weight of blade equipment	2870 kg (6,329 lbs)	2068 kg (4,560 lbs)	2168 kg (4,779 lbs)

RIPPER (for STD only)

Type	Multi-Shank
Tool Beam	
Overall width	1869 mm (73.6")
Cross section, height x width	229 x 254 mm (9" x 10")
Ground clearance under tool beam	
- ripper raised	1013 mm (39.9")
- ripper lowered	99 mm (3.9")
Shank	
Number of shanks per ripper, max.	5
Spacing, center to center	419 mm (16.5")
Penetration, max.	429 mm (16.9")
Ground clearance, max. raised	493 mm (19.4")
Shank positions (vertical)	2
Weight	
Complete, including one shank	1320 kg (2,910 lb)
Each additional shank	54 kg (120 lb)



TD-12C-XP

CRAWLER DOZER

STD & LGP



HYDRAULIC CONTROL SYSTEM

Pump, torque converter driven.			
Output @ 17.2 MPa (2,500 psi)			
& 2500 engine rpm	115.7 l/min (30.5 gal/min)		
Relief valve setting			
blade lift & ripper	17.2 MPa (2,500 psi)		
tilt	17.2 MPa (2,500 psi)		
Cylinders, bore and stroke,			
ripper	165 x 401 mm (6.5" x 15.8")		
		tilt (6 way)	102 x 202 mm (4.0" x 7.94")
		tilt (straight/semi-u)	140 x 147 mm (5.5" x 5.78")
		lift (std & 6 way)	89 x 990 mm (3.5" x 38.98")
		lift	89 x 910 mm (3.5" x 35.83")
		angle (6 way)	102 x 493 mm (4.0" x 19.4")
		Reservoir with sight gauge, right fender mounted	
		system capacity, includes cylinders & lines	62 l (16.5 gal)

STANDARD EQUIPMENT

<ul style="list-style-type: none"> • Air cleaner, dry type with safety element and service indicator • Alarm, back-up • Alternator, 50 A • Antifreeze: -37° C (-34° F) • Batteries, (2), 12 V, maintenance free (625 CCA @ 0° F) • Brake, parking with lock • Canopy, ROPS (SAE J1040) with seat belt (SAE J386) • Decelerator, foot operated (left side location) • Door, radiator guard, hinged • Engine side enclosures • Fan, blower • Filters, engine oil, full flow with replaceable elements and fuel filter with water separator • Filter, transmission, "spin on" type • Fuel strainer, in-line • Gauges, instrument module, lighted • Guards: crankcase, hinged, with front pull hook, fan, instrument panel, sprocket rock deflector, sprocket dirt deflector, radiator, transmission • Heat exchangers, engine oil, and power train oil • Hitch, retrieval • Hood, sloped • Horn, electric 	<ul style="list-style-type: none"> • Hourmeter, electric • Hydraulic control, 1 valve, 1 lever • Lights, 2 front, 1 rear, 1 dash • Muffler, noise suppression w/curved exhaust pipe • Power train diagnostic test center • Radiator, iso-mounted, with sight gauge • Receptacle, starting/charging • Seat, suspension, adjustable with arm rests • Starting, 24V • Steering, 2 speed, geared with left control hand lever location • Torque converter, single stage • Track adjusters, hydraulic • Track chain guides, front & rear, integral • Track guides, center • Track chain, sealed and lubricated (LTS) with split master link, 42 links • Track frame: long track, 7 rollers, 1.88 m (74") gauge, lifespan lubricated rollers and idlers • Track shoes, 559 mm (22") square corner • Transmission: full power shift, 3-speed forward, 3-speed reverse
--	--

OPTIONAL ATTACHMENTS

<ul style="list-style-type: none"> • Air conditioner/heater/pressurizer/defroster • Batteries (2), cold start, 12 V • Bulldozers, Semi-U or 6 way (hydraulic angle and tilt) <ul style="list-style-type: none"> Hydraulic tilt (for Semi-U or Straight) Straight (for LGP) • Cab, ROPS with max sound suppression, sun visor, interior mirror, additional grab handles and steps plus full engine and hydraulic system environmental sound reduction features. • Drawbar, fixed • Ether starting aid • Fan, reversible • Guards: <ul style="list-style-type: none"> - Crankcase, severe service w/hook - Exhaust extension, w/guard for sweeps - Screen, rear - Sprocket seal, sanitary landfill only - Sweeps, front & rear - Track roller, full length - Transmission, severe service • Heater/pressurizer/defroster 	<ul style="list-style-type: none"> • Hydraulic controls <ul style="list-style-type: none"> - 3 valve, 1 lever "T" type - 2 valve, 1 lever - diverter valve • Lights, 2 front on cab • Radiator, armored core • Ripper, multi-shank • Ripper, shank w/pin • Tool box • Tools, 17 items • Track frame for LGP • Sound suppression pkg. for ROPS canopy equipped tractors • Track shoes: <ul style="list-style-type: none"> 508 mm (20") square corner 610 mm (24") square corner (for use with Semi-U blade only) 686 mm (27") offset (for use with 6-way blade only) 864 mm (34") clipped corner, for LGP 864 mm (34") swamp type (cast), for LGP • Vandalism protection
--	--

Specifications subject to change without notice. Illustrations and pictures may include optional equipment and may not include all standard equipment.

DRESSTA Co.Ltd.
 A JOINT VENTURE OF KOMATSU AMERICA INTERNATIONAL CO. AND HUTA STALOWA WOLA SA
 Kwiatkowskiego 1, 37-450 Stalowa Wola, P O L A N D
 tel.48 15 843 5252, 843 4556 fax:48 15 844 4714, 872 0207
 www.dressta.com.pl

